

## My Hungary butterfly conservation working holiday

My dairy of the trip :

Travelling to Hungary was very interesting because i travelled one way by train and and the other by minibus . The route was very interesting that i travelled by train leaving London St Pancreas on the 8:05 Eurostar service after staying a night in the Youth hostel nearby . So the service continued from London to Brusseles Midi arriving at 10:56 then on the Thalys high speed service to Koln :



Then further travelling on to munich on the new ICE 3 German service



Then once arriving at Munich i travelled further on to Budapest on the night sleeper service :



Arrival at Budapest Keleti



Then for a tour of the famous sights of Budapest such as the holy square and was occupied matthias church alongside other key landmark feature such as the hugarian royal palace that was occupied until 1918



The tour of the city was very interesting learning about the history of a very diverse place many of the buildings designs seem very Russian in influence further sites were the hungarian paliament buildings across the river



So after the tour of Budapest the 3 hour journey to the Aggtelek national park began in the national park minibus with a short stop in a wonderful park with a water feature and my first Butterfly of the journey !!!



So arrival at the guest house in josvafo



So the first day survey in a most wonderful unimproved hay meadow the aims of the survey were to each cut sward was monitored to determine the numbers of dead invertibrates this was directly linked to the speed and height that the sward was cut at the transect length was 100 meters by 5 meters in width . In addition to this another area was surveyed to be able to make a comparison between the uncut site results and the different speed cut sites



The results of this survey were very important because it allowed the best methods to be established in order to manage the site in the most species friendly way .

Then in the afternoon a walk into the near by fields that had not been cut to identify and flora in these areas examples are as follows .

Crown Vetch  
Whorled Clary  
Yellow Loosetrife  
Meadow Clary  
Field Scabious  
Common Agimoney  
Ladys bedstraw  
St Bernards star  
St Johns wort  
Purple loostrife

Butterflys

Pale clouded yellow  
Marble white  
Green underside blue

Catipillars  
Bedstraw hawk moth



The third day a wonderful and incredibly informative day on crickets and grasshopper on the picturesque karst we saw some amazing species such as a parasitic wasp and wonderful grasshoppers

And internationally rare species on the red list



Some of the flora was fascinating as well such as crested cow wheat and irish feabane



Then in the evening a hungarian language lesson which was great fun and highly entertaining see separate sheet .

Day four

Half a day identifying flora with Roland the incredible diversity of the area we covered was phenomenal many rare and endemic species such as ground pine and Goatsbeard



Other notable species such as blue pimpenal and forking larkspur



Then in the afternoon we had a tour of the international world heritage site caves which were very interesting and beautiful



Then a very interesting presentation by varga zoltan



Day 5

A wonderful and glorious day hay bayling



The small bails were being further distributed to local farms to feed livestock but at the end of the day an unex[ected surprise

Horse power!!!



And stacking the hay to be kept dry



Day six

A wonderful and intriguing day underground in the Aggletek cave system a witnessing a most spectacular structure Europe's biggest stalimite and discovering a endemic blind creatures of the stunning caves



Day seven

A search for amphiious wonders such as agile frogs and blind salamanders



And fire bellied toads



Further butterfly species we saw were scarce swallowtail ,Meleagers Blue.  
Along with the following floral species –wood cow wheat ,Restharrow,and a  
pair of long horns



Then in the afternoon a field survey for Geranium Argus on a natura 2000 site  
were the foodplant for this species is found



Day eight

A second survey day in a disused vineyard which had a very diverse landscape with many different habitat types



The height variance meant that the species found varied greatly (see records kept by Nigel for species present in the different areas)



Green lizard

Then in the evening a informative talk about the park and natura 2000 sites and their significance this was very useful because it helped to put many aspects of the surveying and aspects of the park into context and to deliver an important meaning . Further more the importance of spa which were similar to those in the UK

Day 9

A shorter surveying day with some outstanding results such as the Queen of Spain fritillary and an in flower Cross Gentian!! And a provincial short tailed blue.



And a common glider



The survey area a wonderful landscape !!

Then in the afternoon the search for the large blue and maculei rebuli together on one site .



Day 10

A splendid day surveying another fairly small vineyard and the honey maker!!



Butterfly present blue spot hairstreak1 ,spotted fritillary  
2



1

Also the wonderful spruce hawkmoth

And a branch line service train



## Day 11

A most special and interesting day surveying some different sites including the sites previous managed by the group using brush cutter and other mangement tools

Some of the species present were as follows

Silver washed fritillary 1

Woodland grayling

Map

Lessser purple emporer 2



Then in the afternoon a wonderful lunch with the mayor of the village and at the school followed in the afternoon by a guided tour of the village



A very interesting lunch  
Starter hot cherry and fruit soup and the main course

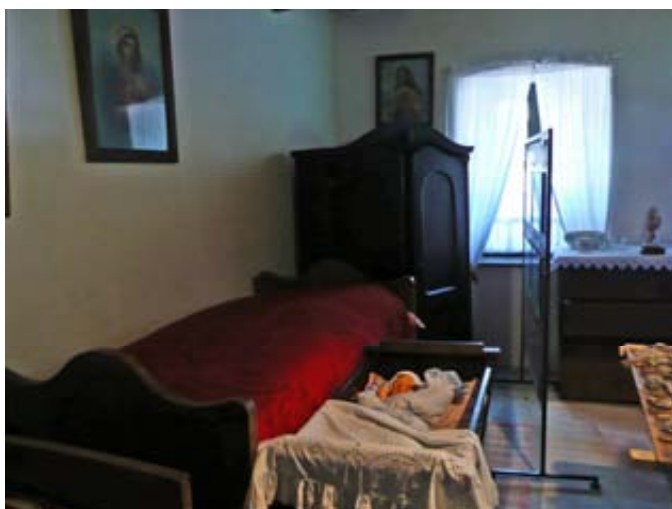


And also cottage cheese style products with pasta

Then the tour of the village starting with the wonderfully ornate church and breathtaking inside roof design



Then followed by the small tour of the local museum of the way life used to be in the village



Day 12

Over the border in to slovakia and a wonderful limestone gorge



And some wonderful species

purple emperor



Hungarian glider



Then in the evening travelling to a spectacular quarry to see mederrian horseshoe bats



Day 13

Trip to the wonderful cake shop



Then onward to the wonderful 15th century castle that had great influence in Hungary during this period



Then wine tasting in the evening



Day 14

The last day

A wonderful day with a search for the elusive fire salamander



And a magical horse and carriage ride



And final dinner



The journey back took two days and some camping ,on the first night we had dinner in a small restuarant see images below



And breakfast the following morning



Then after one more night in belgium

Home to Dover on the ferry



Carbon emissions which form of transport that i use was greener with lower Co2 emissions

Eurostar 24.3 grams per km/travelled

Total distance travelled eurostar  
London- brusseals 340km  
8262 grams Co2

Brusselles  
180km

Unfortunately i could not find the carbon emissions for the other services

Funding was provided by the European lifelong learning scheme run by the leonardo trust ,also the Dorset buterfly conservation group and the kingcombe centre in Dorset .

For further infomation please contact

Nigel Spring on 01963 23559

and at

346 Mundens lane  
Alweston  
Sherborne  
Dorset  
DT9 5HU